

Double Hotel Bins

Code 00218206 - Chrome

DESCRIPTION

The Hotel line focuses on minimalist and functional features, which provide a more versatile environment. The purpose of these products is to create an ample space, with useful pieces to please guests at their accommodation. Among these products, the double hanger is perfect for those who choose to optimize space, as it is indicated to support two pieces of clothing or towels, for example, giving greater comfort to the customer when using the bathroom or bedroom.



TECHNOLOGY AND CHARACTERISTICS



Bi-nickel
Chrome



High
durability

ADVANTAGES

Bi-nickel chrome plated, providing long-lasting durability and higher resistance to corrosion, maintaining the product beautiful and glossy much longer.

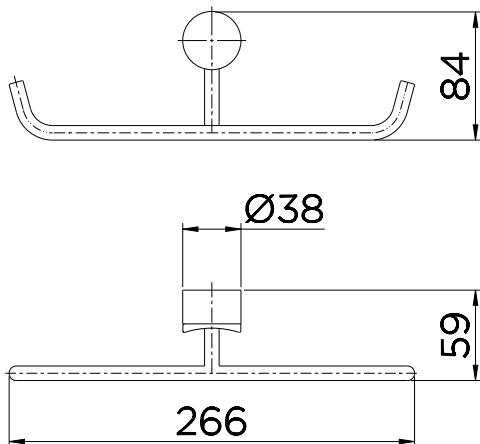
WARRANTY

Call Docol Authorized Distributor in your country.

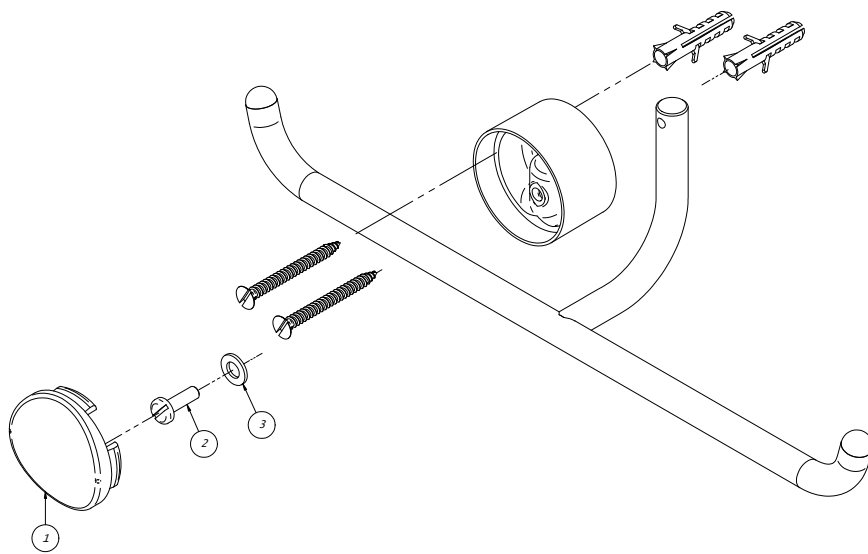
TECHNICAL SPECIFICATIONS

PACKAGING CONTENT	1 mounted accessory and 1 installation manual
COMPOSITION	Copper alloys, Elastomer, engineering plastic
TYPE OF INSTALLATION	Wall

DIMENSIONS



SPARE PARTS



1	KIT PORTA LETRA SINGLE	00255606
2	KIT PARAF	00038800
3	KIT ARRUELA (0)10	00245800

WANT YOU KNOW MORE?

REFER TO THE INSTALLATION MANUAL
IN OUR WEBSITE.