

Single wall-mounted soap dish

Code 00158606 - Chrome

DESCRIPTION

Beauty, organization and versatility, Single accessories can make your environment more organized, with each item in its proper place. The rounded and thin lines of the Single line offer products with a minimalist and contemporary design, perfectly combining environments that have the same characteristics. The lines of faucets, such as Oasis Flex and Comfort Flex, are great combinations with these accessories. This soap dish has the same features and can be purchased individually or in conjunction with the other accessories in the line. The finish of the product allows for a simple design, since the screws are not sampled. Remember that the support that fixes the soap dish on the wall is made of metal and receives a chrome finish. The part on which the soap is supported is made of acrylic, with an embossed texture in order to provide water drainage, so as not to damage the product.



TECHNOLOGY AND CHARACTERISTICS



Bi-nickel
Chrome



High
durability

ADVANTAGES

Bi-nickel chrome plated, providing long-lasting durability and higher resistance to corrosion, maintaining the product beautiful and glossy much longer.

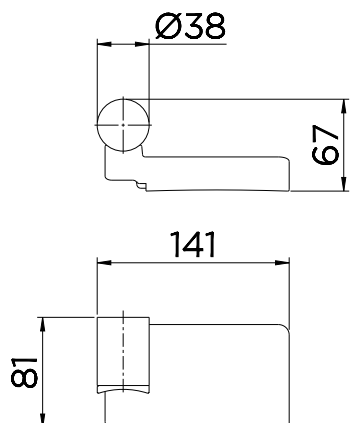
WARRANTY

Call Docol Authorized Distributor in your country.

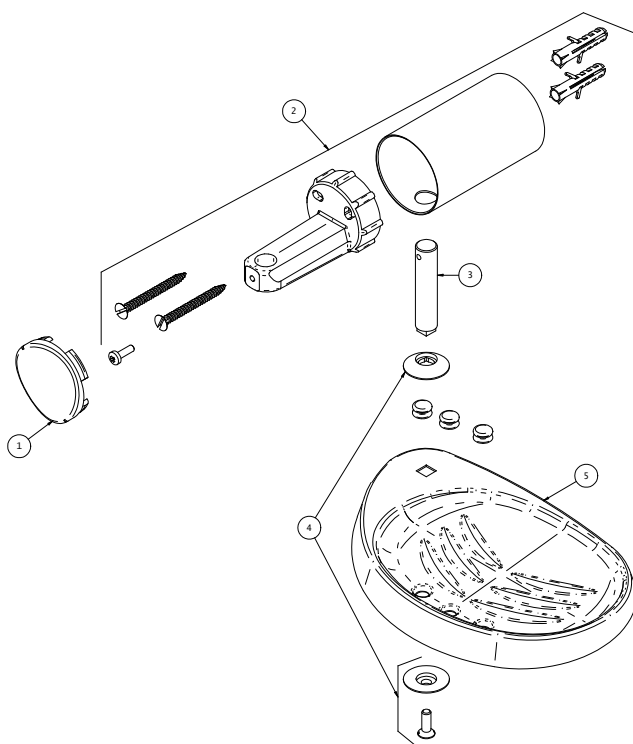
TECHNICAL SPECIFICATIONS

| | |
|----------------------|--------------------------------------|
| PACKAGING CONTENT | 1 accessory, 2 bushings and 2 screws |
| COMPOSITION | Copper alloy, Engineering plastic |
| TYPE OF INSTALLATION | Wall |

DIMENSIONS



SPARE PARTS



| | | |
|---|------------------------|----------|
| 1 | KIT PORTA LETRA SINGLE | 00255606 |
| 2 | KIT SUPORTE PA | 00568306 |
| 3 | KIT PINO FIXAÇÃO | 00257306 |
| 4 | KIT ARRUELA E PARAFUSO | 00257906 |
| 5 | KIT SABONETEIRA SINGLE | 00257406 |

WANT YOU KNOW MORE?

REFER TO THE INSTALLATION MANUAL
IN OUR WEBSITE.