

Order number: 01 193 00 99

## Concealed urinal flush valve COMPACT II

Low-noise concealed flush valve. For accepting SCHELL urinal control/operating panels. Conform to DIN EN 12541. Internal isolating valve.

### Scope of delivery

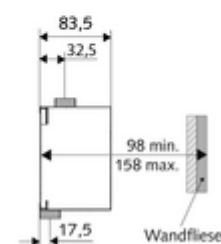
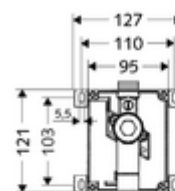
- Masterbox
  - Roughing-in housing
  - Concealed flush valve COMPACT II, with isolating valve and sealing plug
- Flush-mounted cap

### Technical data

- Flow pressure: 0.8 - 5.0 bar
- Flush flow: 0.3 l/s
- Material: Housing Plastic; Waterpath Brass, conform to German drinking water regulations
- Connection: DN 15 G 1/2 AG
- Outlet: DN 15 G 1/2 AG
- Certificates: PA-IX 18779/I, DIN-DVGW
- Noise class: I, at 100% flow

### Delivery data

- Weight: 0,88 kg/Piece
- Packing unit: 1



### Necessary associated articles

#### Urinal controls

Urinal control EDITION E	Order no: 02 806 06 99	or
Urinal control EDITION E	Order no: 02 806 15 99	or
Urinal control EDITION E	Order no: 02 807 28 99	or
Urinal control EDITION E	Order no: 02 808 06 99	or
Urinal control EDITION E	Order no: 02 808 15 99	or
Urinal control EDITION E	Order no: 02 809 28 99	or
Urinal control EDITION E	Order no: 00 230 06 99	or
Urinal control EDITION E	Order no: 00 230 15 99	or
Urinal control EDITION E	Order no: 00 231 28 99	or
Urinal control COMPACT LC	Order no: 01 197 00 99	or
Urinal control COMPACT LC	Order no: 01 196 00 99	

#### Urinal operating panels

EDITION urinal operating panel	Order no: 02 800 06 99	or
EDITION urinal operating panel	Order no: 02 800 15 99	or
EDITION urinal operating panel	Order no: 02 801 28 99	

### Mounting instructions

- For electronic triggering, provide power supply in accordance with the respective urinal control.
- When used with the SCHELL SWS water management system, use a standard bus cable H(St)H2x2x0.8 (provided on site) for the SWS BE-K wired bus extender as required.
- Always use original SCHELL mains adapters and connection cables.