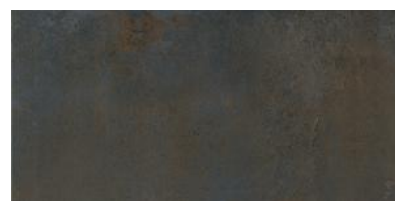


## TECHNICAL FEATURES

MODEL: <b>K.CADMIAE COAL</b>
SIZE: <b>30x60 (C)</b>
THICKNESS(mm): <b>9.5</b>
DATE: <b>31/08/2022</b>
CODE: <b>017.450.0298.01486</b>
GROUP: <b>GROUP BIa UNE-EN 14411 Annex G / SASO ISO 13006:2018 Annex G</b>
TILE TYPE: <b>GL</b>
FINISH: <b>RECTIFIED MATT</b>
FAMILY: <b>DECORSTONE-PORCELAIN TILES (COLOURED BODY)</b>
NUMBER OF DESIGNS:



TEST		RESULT
UNE-EN ISO 10545-2	DIMENSIONAL FEATURES	COMPLIES WITH THE STANDARD
UNE-EN ISO 10545-3	WATER ABSORPTION	<= 0,5 %
UNE-EN ISO 10545-4	MODULUS OF RUPTURE	1600-2400 N
	BREAKING STRENGTH	35-45 N/mm2
UNE-EN ISO 10545-6	RESISTANCE TO DEEP ABRASION (MM3)	< 130 mm3
UNE-EN ISO 10545-7	RESISTANCE TO SURFACE ABRASION	-
UNE-EN ISO 10545-8	LINEAR THERMAL EXPANSION	<7,0 x 10-6 °C-1
UNE-EN ISO 10545-9	THERMAL SHOCK RESISTANCE	RESISTS
UNE-EN ISO 10545-11	CRAZING RESISTANCE	RESISTS
UNE-EN ISO 10545-12	FROST RESISTANCE	RESISTS
UNE-EN ISO 10545-13	CHEMICAL RESISTANCE - AMMONIUM CHLORIDE 100 G/L	A
	CHEMICAL RESISTANCE - SODIUM HYPOCHLORITE 20 MG/L	A
	CHEMICAL RESISTANCE - HYDROCHLORIC ACID 3%	COMPLIES WITH THE STANDARD
	CHEMICAL RESISTANCE - CITRIC ACID 100 G/L	COMPLIES WITH THE STANDARD
	CHEMICAL RESISTANCE - POTASSIUM HYDROXYDE 30 G/L	COMPLIES WITH THE STANDARD
UNE-EN ISO 10545-14	STAIN RESISTANCE - GREEN AGENT IN LIGHT OIL	5
	STAIN RESISTANCE - IODINE SOLUTION IN ALCOHOL	5
	STAIN RESISTANCE - OLIVE OIL	5

SLIP RESISTANCE

TEST		RESULT
UNE 41901:2017 EX	SLIP RESISTANCE (PENDULUM)	CLASE 1
DIN 51130	CRITICAL ANGLE OF SLIP (INCLINED PLATFORM)	R9
DIN 51097	CRITICAL ANGLE OF SLIP. WET-LOADED BAREFOOT AREAS	B
(PTV) DRY	CLASSIFICATION ACCORDING TO PENDULUM TEST VALUES (PTV) DRY	Low
(PTV) WET	CLASSIFICATION ACCORDING TO PENDULUM TEST VALUES (PTV) WET	Moderate
ANSI A326.3	DYNAMIC COEFFICIENT OF FRICTION (DCOF) OF RIGID FLOORS.	-

TEST		VALOR UPEC
	UPEC CERTIFICATION	-

Declaration of Performance:

[https://www.pamesa.com/ERP/4.0/empresas/151/045/ficheros/t00030006/113/DdP\\_DoP\\_N003CPR2013.pdf](https://www.pamesa.com/ERP/4.0/empresas/151/045/ficheros/t00030006/113/DdP_DoP_N003CPR2013.pdf)

TECHNICAL DEPARTMENT  
PAMESA CERÁMICA